

# Setting up MySQL to work with BlenderPeople

© Roland Hess 2005

This document gives step-by-step instructions for creating the proper user account in MySQL so that BlenderPeople will function correctly.

## Requirements

<b>Software:</b>	<b>Available at:</b>
MySQL 4.1	<a href="http://www.mysql.com/downloads/mysql-4.1.html">http://www.mysql.com/downloads/mysql-4.1.html</a>
MySQL Control Center	<a href="http://www.mysql.com/downloads/mysqlcc.html">http://www.mysql.com/downloads/mysqlcc.html</a>

## Installation

Installation of MySQL 4.1 is significantly more involved than it used to be. Accepting the installer defaults will produce good results with BlenderPeople. You can alter the installation path, install additional packages and change some settings without affecting BlenderPeople's functionality. You should not, however, mess with options pertaining to InnoDB vs. ISAM.

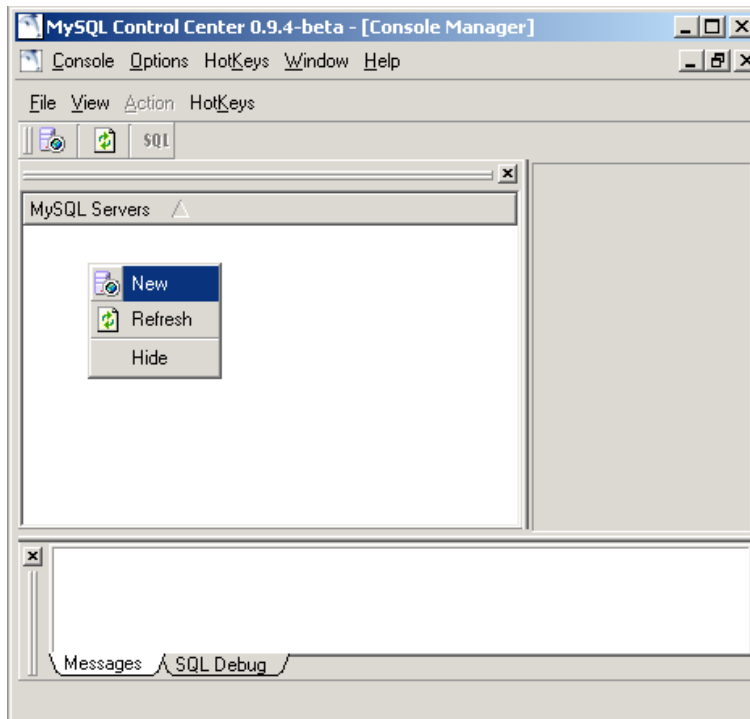
At one point during the installation, you will be prompted to create a root account. This documentation assumes that you have done this, as prompted by the MySQL installer. The examples below also assume that you have created this account with the name "root", and that you wrote down whatever password you chose at installation time.

### 1. Running MySQL Control Center

Double click the MySQL CC icon on your desktop or choose it from your start menu.

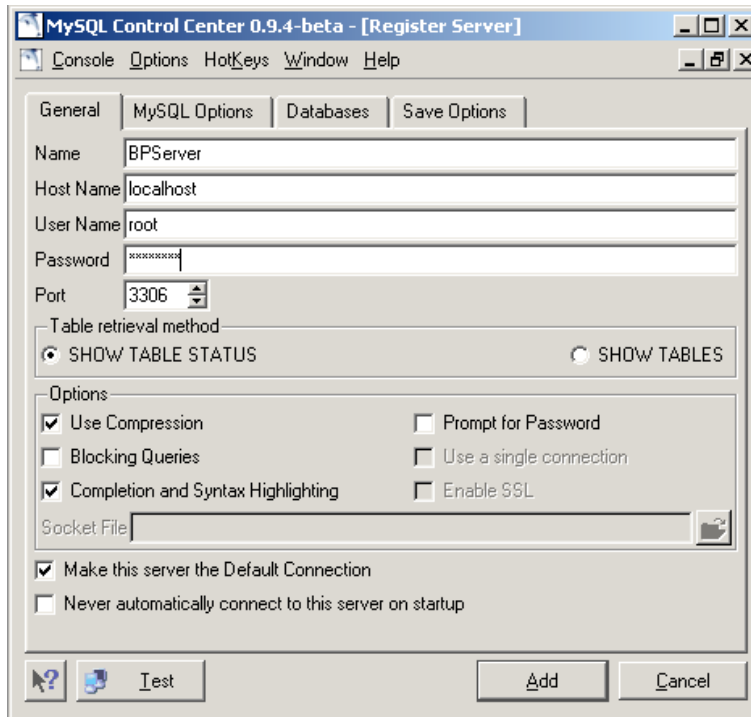
The MySQL Control Center (MySQLCC) program starts.

### 2. Point MySQL CC to your MySQL Server



Right-click in the MySQL Servers panel, then select New.

### 3. Register the MySQL Server

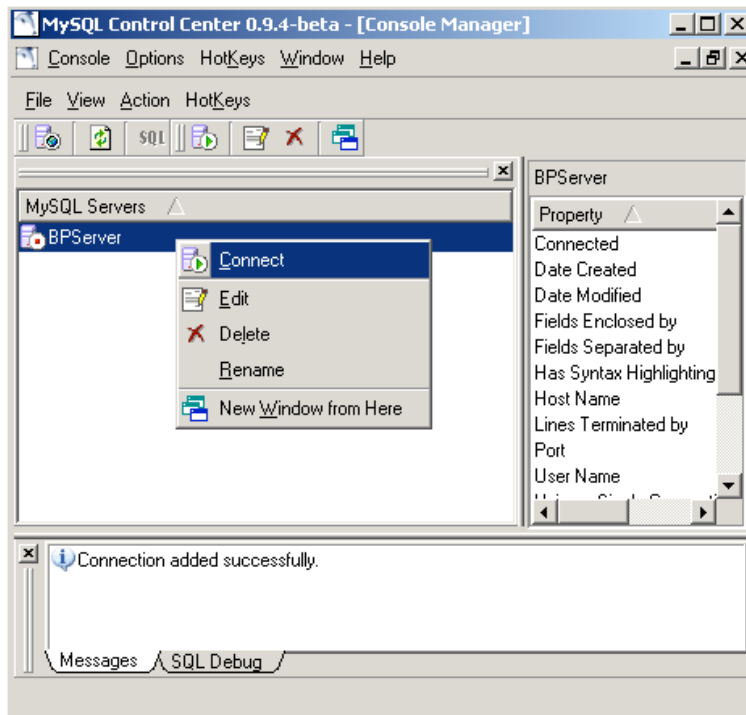


When you select New in the previous screen, this is what you see. Enter a name in the Name field. It does not matter what you call it, but let's just call it "BPSTerver" for fun. Type "localhost" into the Host Name field. User Name will already be set to "root". In the password field, enter the password that you wrote down when you installed MySQL and created the root account.

At this point, you can click the Test button to make sure that everything is working correctly. If it isn't, recheck your settings to these instructions, make sure you didn't mistype "localhost" and that your password is correct. If everything is correct in this panel and it is still not working, then you most likely are not running a MySQL server on your machine. Why not? I'm not sure, but you have unfortunately passed the scope of this tutorial.

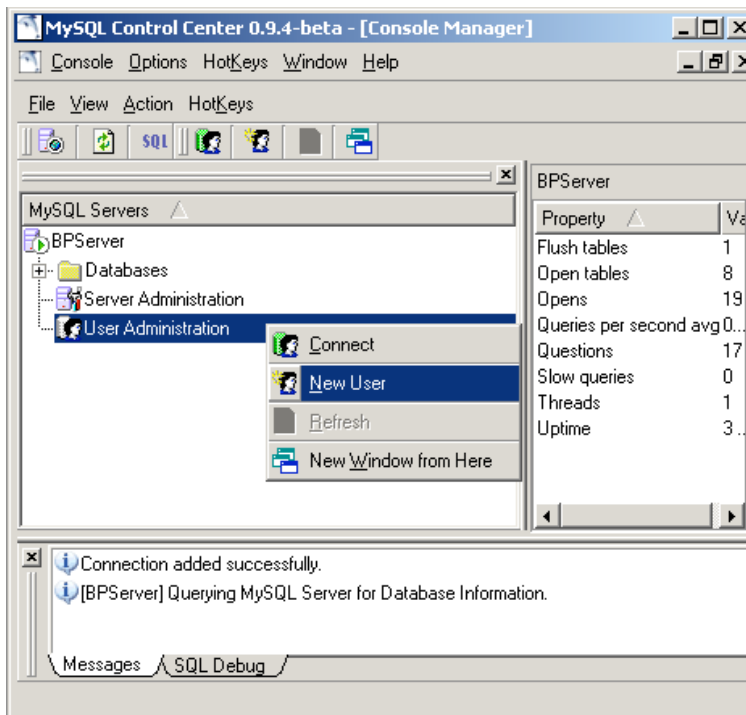
If you have successfully Tested these settings, or are confident of your typing, click the Add button, followed by the Close button.

#### 4. Connect to the Server



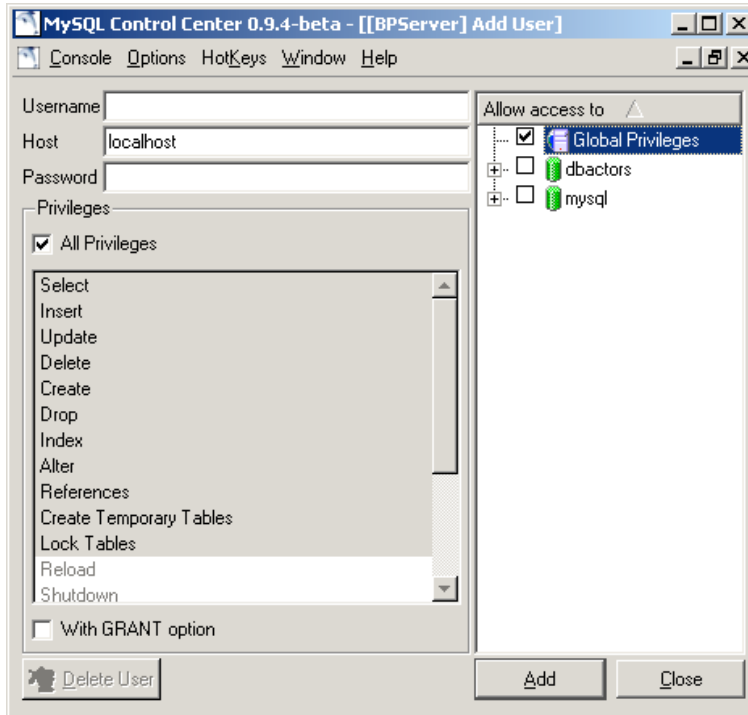
Once you click close on the configuration screen, you are returned to the main window, where you see your BPServer on the left now. Right-click on BPServer, then select Connect from the pop-up menu. Note the little red target on the icon for the BPServer. The red target means that MySQLCC is *not* talking to MySQL. When you are connected, it will look like it does in the pop-up menu - a circle with a green universal "play" symbol.

## 5. Creating a New User



When you click on Connect in the pop-up menu in the previous step, the BPServer icon changes to the green play symbol and three new items appear below it. Right click on the bottom one, User Administration, then select New User from that pop-up menu.

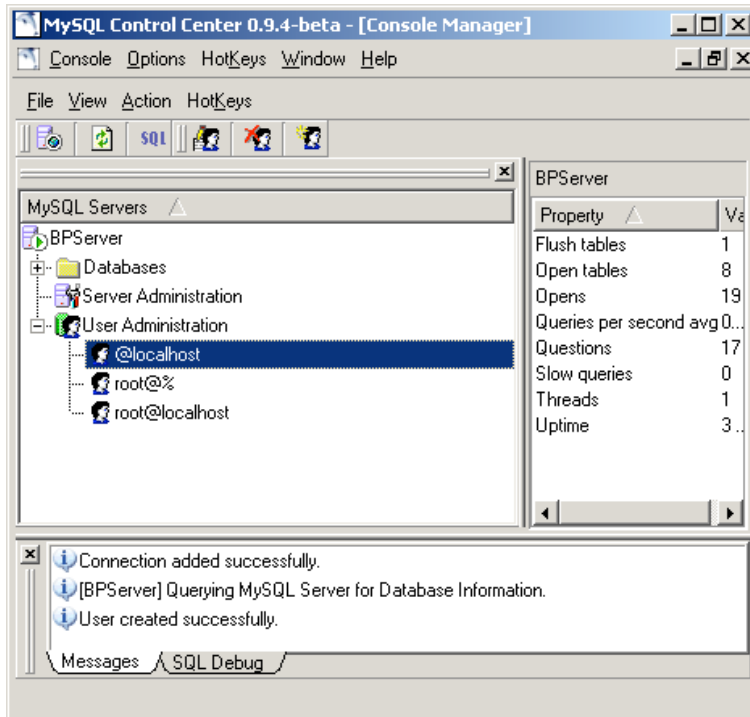
## 6. Setting up the BlenderPeople user account



Upon choosing New User, you are presented with this window. Enter "localhost" into the Host field. Put a check in the All Privileges box in the Privileges pane. Put a check in Global Privileges in the Allow Access To pane. Click Add, then Close.

One small word of warning if you are a security freak. Everyone else can move on. What you just did was to create an account that will accept any user who is physically at your computer, regardless of user name or password. This leaves your MySQL installation vulnerable to an attack by a malicious user who has physical access to your computer, or who is able to spawn local processes on your machine that are capable of utilizing MySQL. This is a very unlikely scenario, and if it bothers you, feel free to create a named and password protected user account. You will have to make a slight alteration to the BlenderPeople code. If you really want to do this, contact me, and I'll show you where and how.

## 7. You're Done



When you return from the New User configuration screen, you should see this. If one of the users in the window is not called "@localhost" as highlighted above, BlenderPeople will not work.

## Conclusion

Hopefully, this document will have alleviated some of the pain to database neophytes in setting things up to work with BlenderPeople. Also, these docs make this procedure look far more laborious than it actually is. Seven big steps, each with it's own illustration is a little much for what we actually accomplished, but I wanted it to be doable for even the most newbish of the newbs. Good luck!